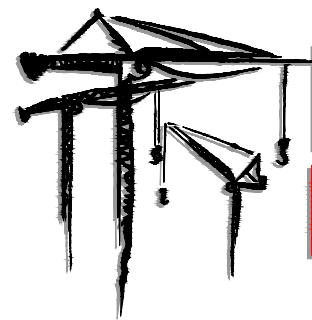


LEWIS
CRANE & HOIST

• Tower Crane • Hoist • Mobile •
Rentals and Sales

 **TEREX**
COMEDIL

COMEDIL - CTT331
Topless Tower Crane



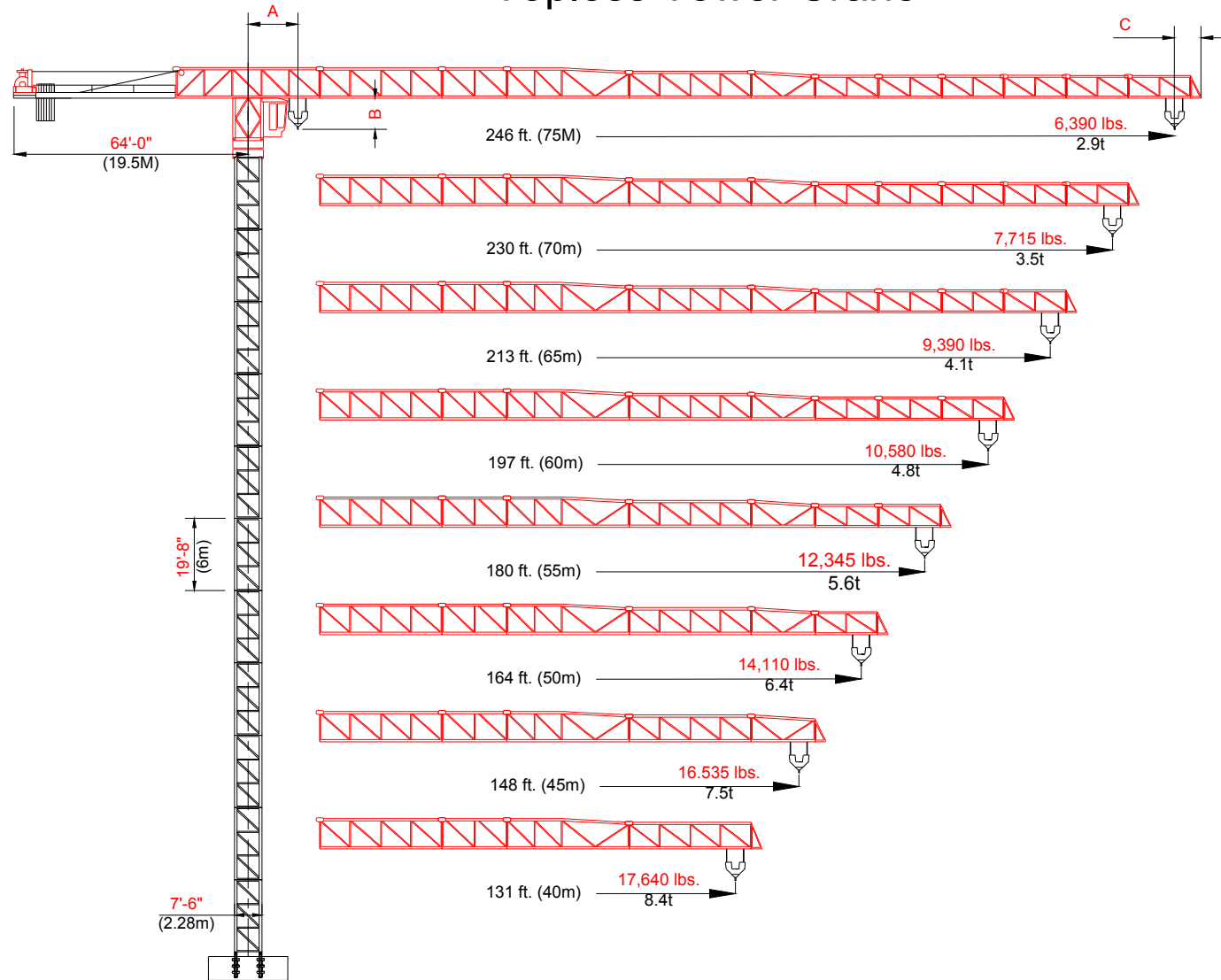
LEWIS
CRANE & HOIST

2214 HWY. 1187 BLDG. 1
Mansfield, TX 76063
817-225-1090

"Your Turnkey Crane and Hoist Provider"



Topless Tower Crane



A= Centerline crane to minimum 2 part hook radius 8'-2" (2.5m)
 B= Bottom of jib to hook block 16'-2" (50.0m)
 C= Add for jib tip radius 4'-11" (1.5m)

Line Speeds and Power Requirements
 COMEDIL CTT331

Hoist Unit
 90 hp 67 kW

2- Part Line	Line Speed	Capacity
Gear 1	134 ft./min 41 m/min	17,840 lbs. 8t
Gear 2	174 ft./min 53 m/min	13,230 lbs. 6t
Gear 3	250 ft./min 76 m/min	8,820 lbs. 4t
Gear 4	442 ft./min 135 m/min	4,410 lbs. 2t
Gear 5	476 ft./min 145 m/min	4,079 lbs. 1.9t

4- Part Line	Line Speed	Capacity
Gear 1	67 ft./min 21 m/min	35,280 lbs. 16t
Gear 2	87 ft./min 27 m/min	26,460 lbs. 12t
Gear 3	125 ft./min 38 m/min	17,640 lbs. 8t
Gear 4	221 ft./min 68 m/min	8,820 lbs. 4t
Gear 5	238 ft./min 73 m/min	8,158 lbs. 3.7t

Unit	Horsepower	Kilowatts	Speed
Luffing	14.8	11	0 - 312 ft/min 0 - 95 m/min
Swing	4 x 48	4 x 65 Nm	0.73 rpm
Traveling	4 x 59	4 x 90 Nm	39 - 79 ft/min 12 - 24 m/min

Power Requirements
 480 Volts, 60 cycle, 3 Phase: 250 amp service

Additional Equipment and Services Available

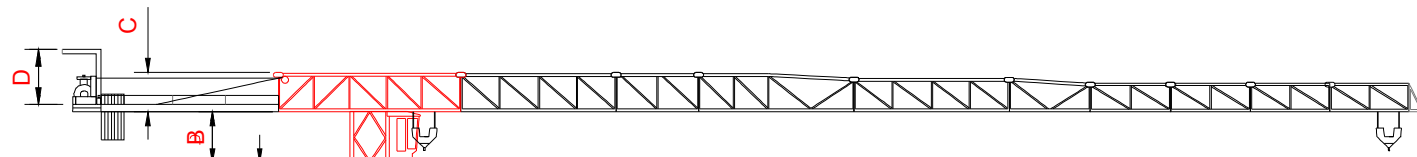
- Moritsch Tower Cranes
- Comedil Tower Cranes
- Peiner Tower Cranes
- Sun Tower Cranes
- Comansa Tower Cranes
- Timberland Derricks
- Hardrock Elevators
- Hercules Elevators
- Specialized Rigging
- Technical Services
- Third Party Inspections
- Parts and Repair Services
- Erection and Dismantlement Services

*Due to product improvement specifications are subject to change without notice.

EQUIPMENT RENTALS - SALES- 24 HOUR SERVICE - YARD STORAGE & TRANSFERS - REGIONAL SERVICE

2214 FM 1187, SUITE 1
 MANSFIELD, TX 76063
 OFFICE: 817-225-1090 FAX: 817-225-1095

WWW.LEWISCRANEANDHOIST.COM



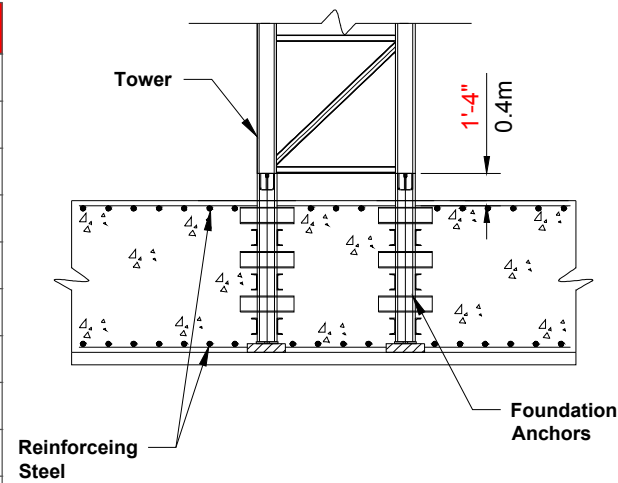
Freestanding Hook Heights on Concrete Foundation

Towers	Sections	Feet	Meters
1	22.6	27	8.3
2	22.6	47	14.3
3	22.6	67	20.3
4	22.6	86	26.3
5	22.6	106	32.3
6	22.6	126	38.3
7	22.6	145	44.3
8	22.6	165	50.3
9	22.6	185	56.3
10	22.6	204	62.3
11	22.6	224	68.3
*12	22.6	244	74.3
*13	22.6	263	80.3
*14	22.6	283	86.3

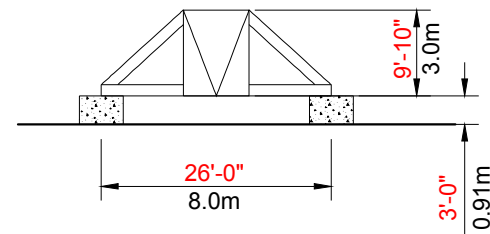
For greater freestanding heights or hook heights contact Lewis Crane and Hoist

Note:
Hook heights may be limited by geographic location

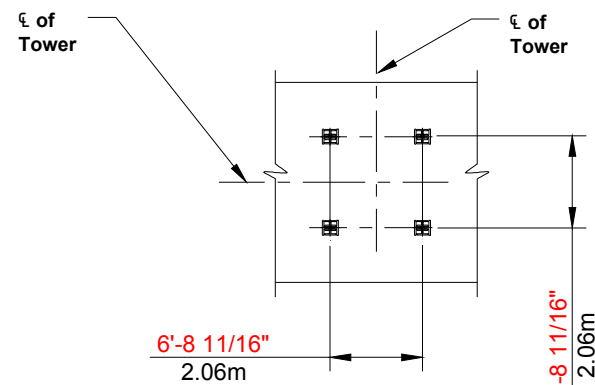
- A = Height of complete slewing unit 6'-7" (2m)
- B = Height of cab tower section 10'-0" (3.05m)
- C = Height of jib section 9'-5" (2.88m)
- D = Height of Service Derrick 12'-0" (3.6m)



Elevation View of Anchors



Elevation View of Undercarriage



Plan View of Anchors

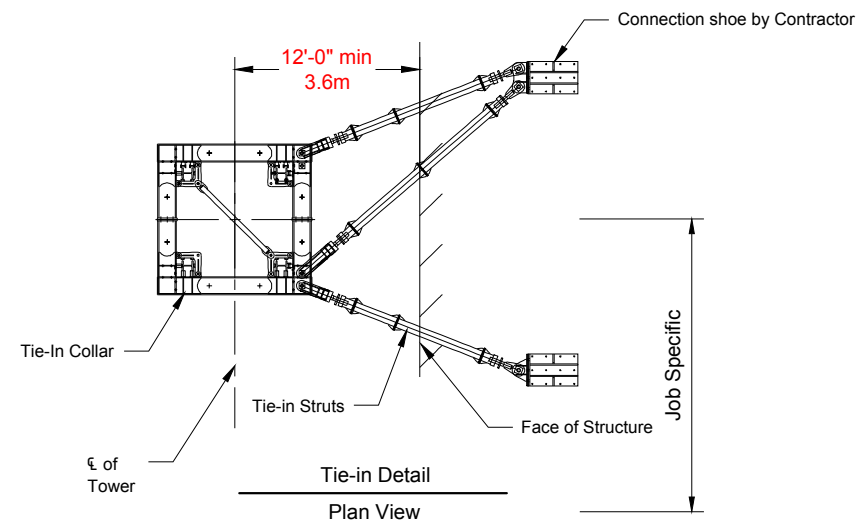
NOTE:

1. Lower or remove top unit prior to operating the crane.
2. If hook height exceeds 330 ft (100m) contact Lewis Crane and Hoist for bracing instructions.

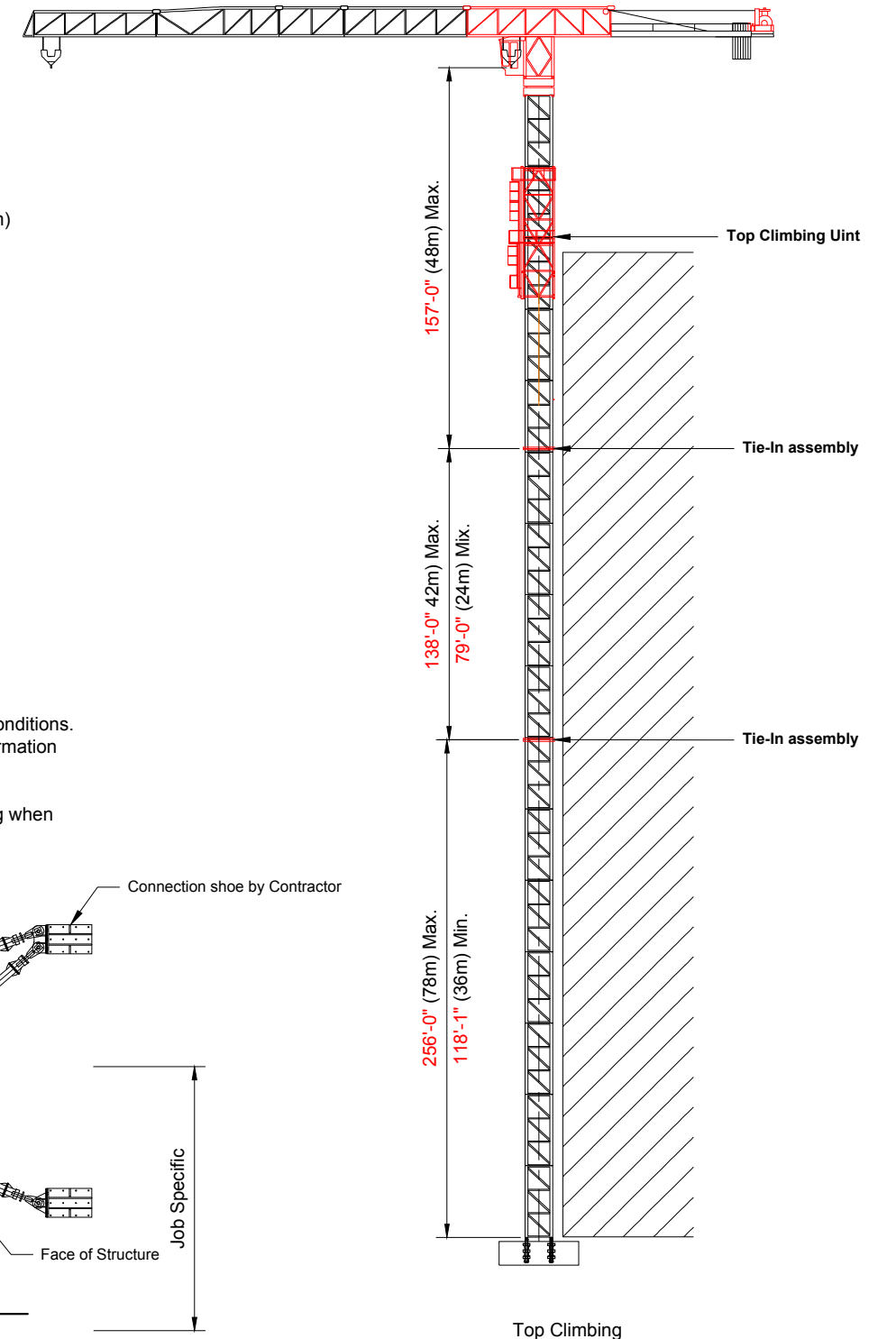
NOTE:

Tie-in installations may vary due to job site conditions. Contact LEWIS CRANE AND HOIST for information regarding dimensions and reaction forces.

The jib must be parallel to the face of building when climbing.



Tie-in Detail Plan View



Top Climbing