

MORITSCH RTT470



2214 HWY. 1187 BLDG. 1

MANSFIELD, TX 76063

OFFICE: 817-225-1090

FAX: 817-225-1095

WWW.LEWISCRANEANDHOIST.COM



MORITSCH RTT470

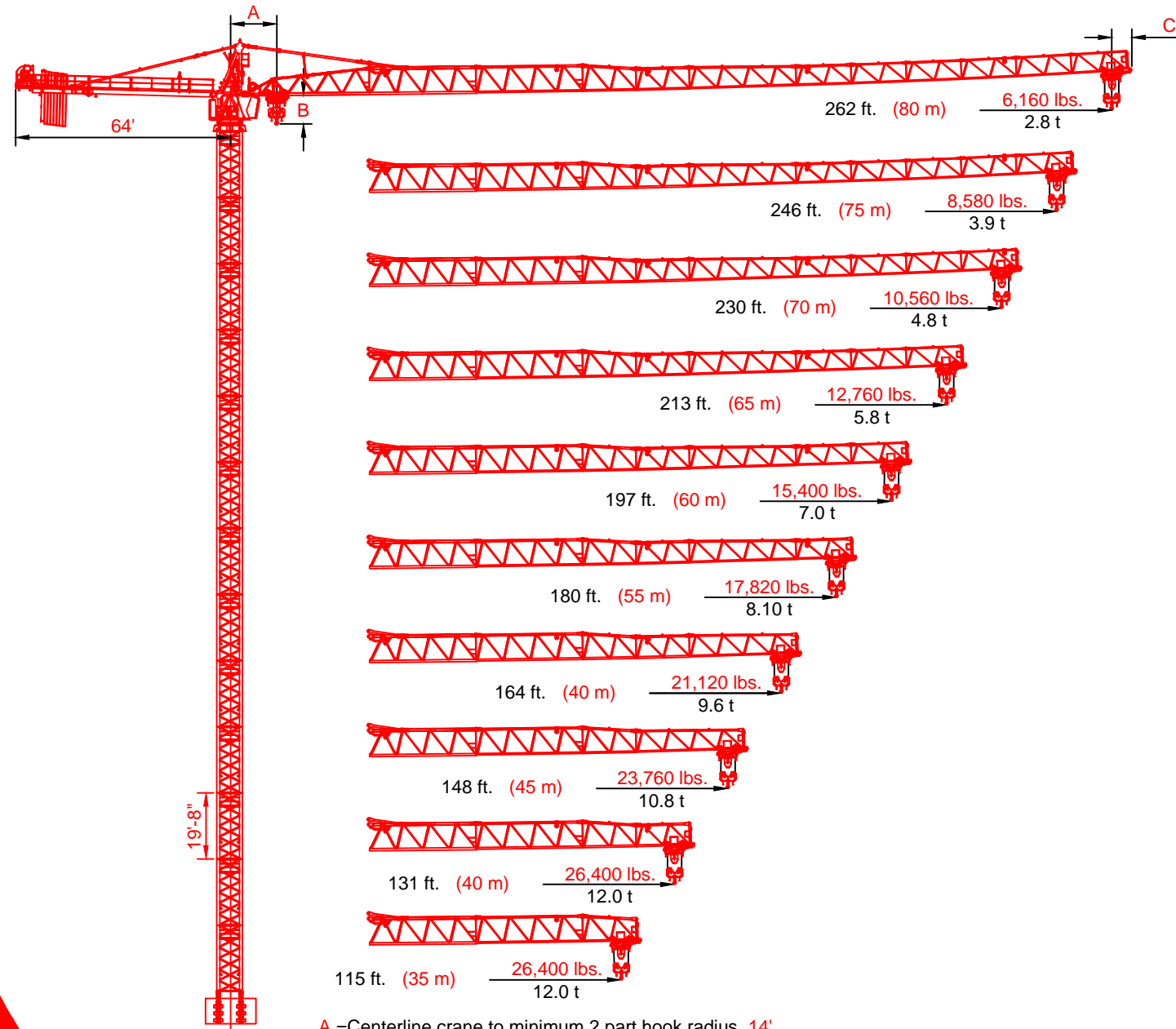
Tower Crane





MORITSCH RTT470

Tower Crane Modular System



A = Centerline crane to minimum 2 part hook radius 14'
 B = Bottom of jib to hook block 8'-6"
 C = Add for jib tip radius 5'-8"

Line Speeds and Power Requirements

Power Requirements

107 hp (80 kW)

2 - Part Line	Line Speed	Capacity
26,455 lbs. 12 t	459 ft/min 140 m/min	2,425 lbs. 1.1 t
	197 ft/min 60 m/min	11,200 lbs. 5.3 t
	141 ft/min 43 m/min	14,196 lbs. 7.8 t
	98 ft/min 30 m/min	26,455 lbs. 12 t

4 - Part Line	Line Speed	Capacity
52,910 lbs. 24 t	230 ft/min 70 m/min	4,850 lbs. 2.2 t
	95 ft/min 29 m/min	24,251 lbs. 11 t
	69 ft/min 21 m/min	35,274 lbs. 16 t
	49 ft/min 15 m/min	52,911 lbs. 24 t

Unit	Kilowatts	Speed
TROLLEY	1 x 14.75hp 1 x 11KW	0 - 328 ft/min 0 - 100 m/min
SWING	2 x 20 hp 2 x 15KW	0 - 0.7 rpm

Power Requirements

480 volts, 3 phase, 60 Hz, 300 amp service

Additional Equipment and Services Available

- Moritsch Cranes
- Comedil Tower Cranes
- Peiner Tower Cranes
- Sun Tower Cranes
- Comansa Tower Cranes
- Timberland Derricks
- HardRock Hoist
- Hercules Elevators
- Specialized Rigging
- Technical Services
- Third Party Inspections
- Parts and Repair Services
- Erection and Dismantlement Services



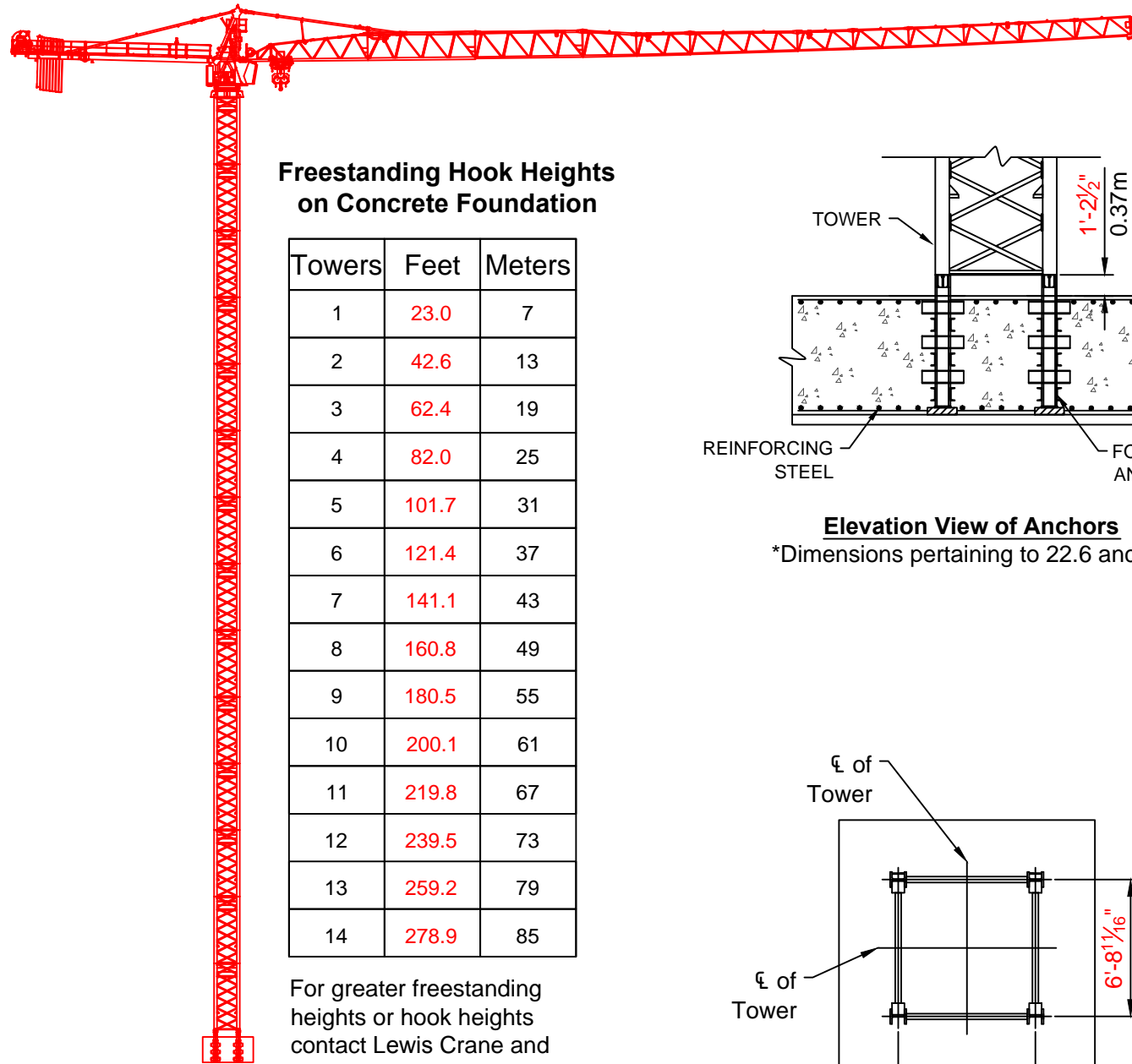
*Due to product improvement specifications are subject to change without notice.

EQUIPMENT RENTALS - SALES - 24 HOUR SERVICE - YARD STORAGE & TRANSFERS - REGIONAL SERVICE

2214 FM 1187 SUITE 1
 MANSFIELD TX 76063

OFFICE: 817 225 1090 FAX: 817 225 1095

WWW.LEWISCRANEANDHOIST.COM



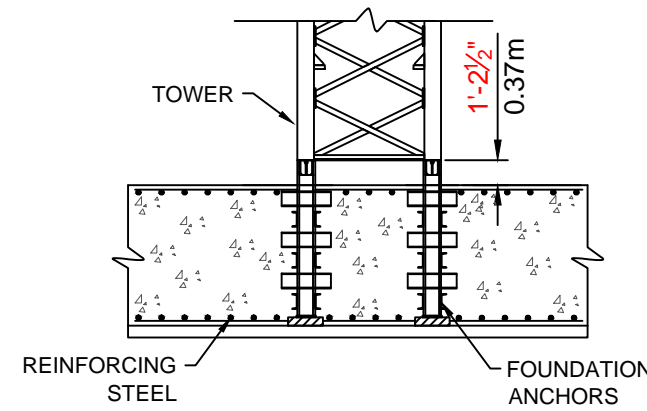
Freestanding Hook Heights on Concrete Foundation

Towers	Feet	Meters
1	23.0	7
2	42.6	13
3	62.4	19
4	82.0	25
5	101.7	31
6	121.4	37
7	141.1	43
8	160.8	49
9	180.5	55
10	200.1	61
11	219.8	67
12	239.5	73
13	259.2	79
14	278.9	85

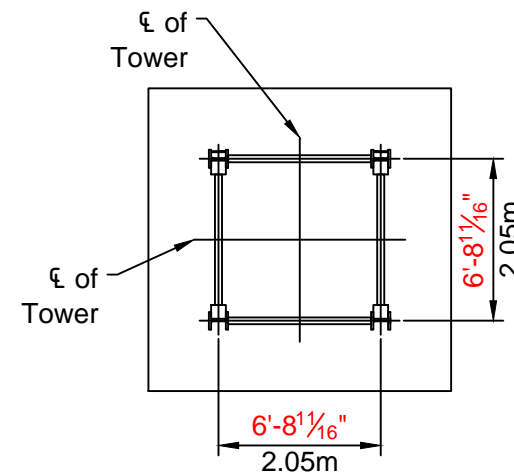
For greater freestanding heights or hook heights contact Lewis Crane and Hoist

Note:
Hook heights may be limited by geographic location

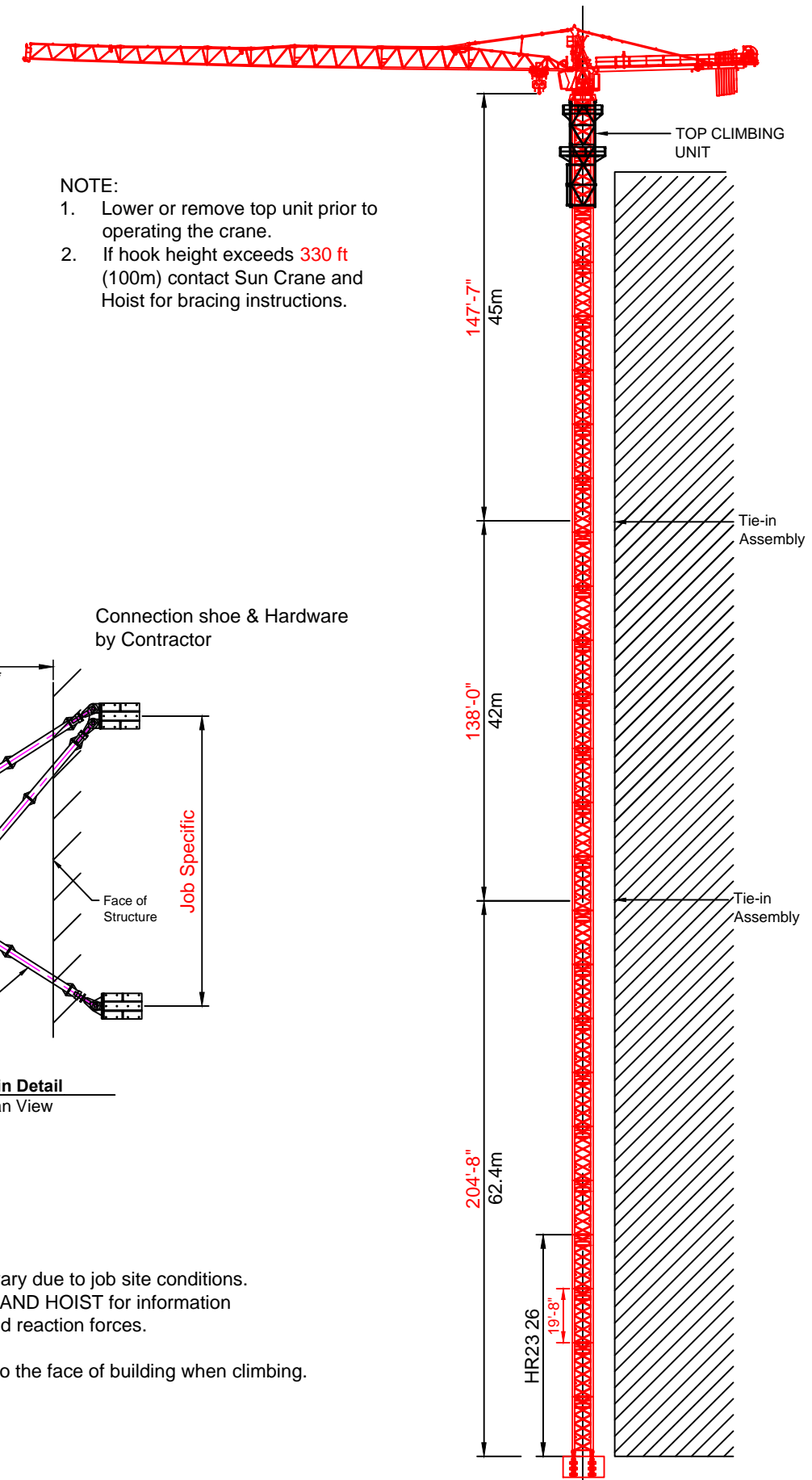
- A = Height of telescoping unit 30'-8" 9.3m
- B = Height of complete slewing unit 7'-5" 2.3m
- C = Height of jib section 8'-2" 2.49m



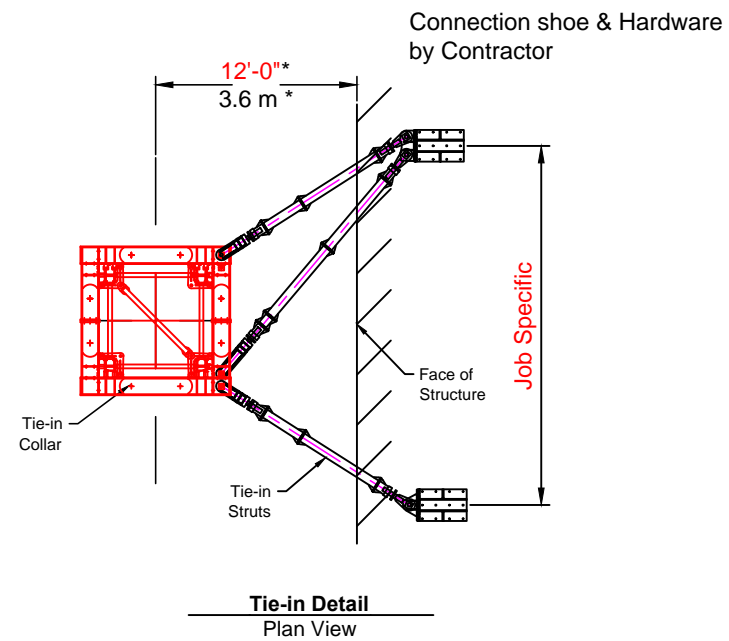
Elevation View of Anchors
*Dimensions pertaining to 22.6 anchor



Plan View of Anchors



NOTE:
1. Lower or remove top unit prior to operating the crane.
2. If hook height exceeds 330 ft (100m) contact Sun Crane and Hoist for bracing instructions.



NOTE:
Tie-in installations may vary due to job site conditions. Contact LEWIS CRANE AND HOIST for information regarding dimensions and reaction forces.

The jib must be parallel to the face of building when climbing.