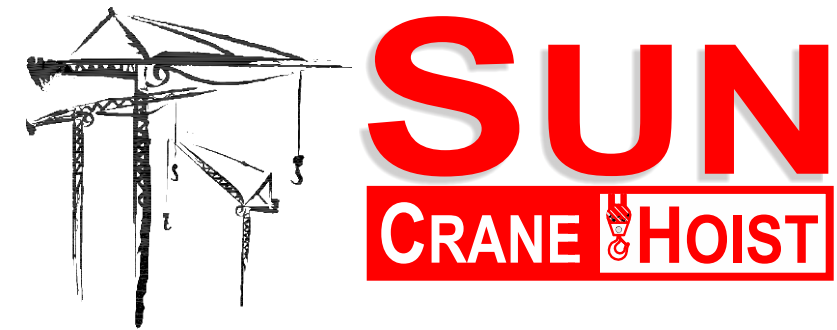




2214 Hwy 1187 - BLDG 1
Mansfield, TX. 76063
Office : 817.225.1090 * Fax : 817.225.1035
Website : www.suncraneandhoist.com

Turnkey Solutions * Parts and Service * Training and Safety * Transportation

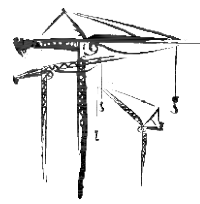


SUN STT 140-8T

Topless Tower Crane
PRODUCT SPEC SHEET

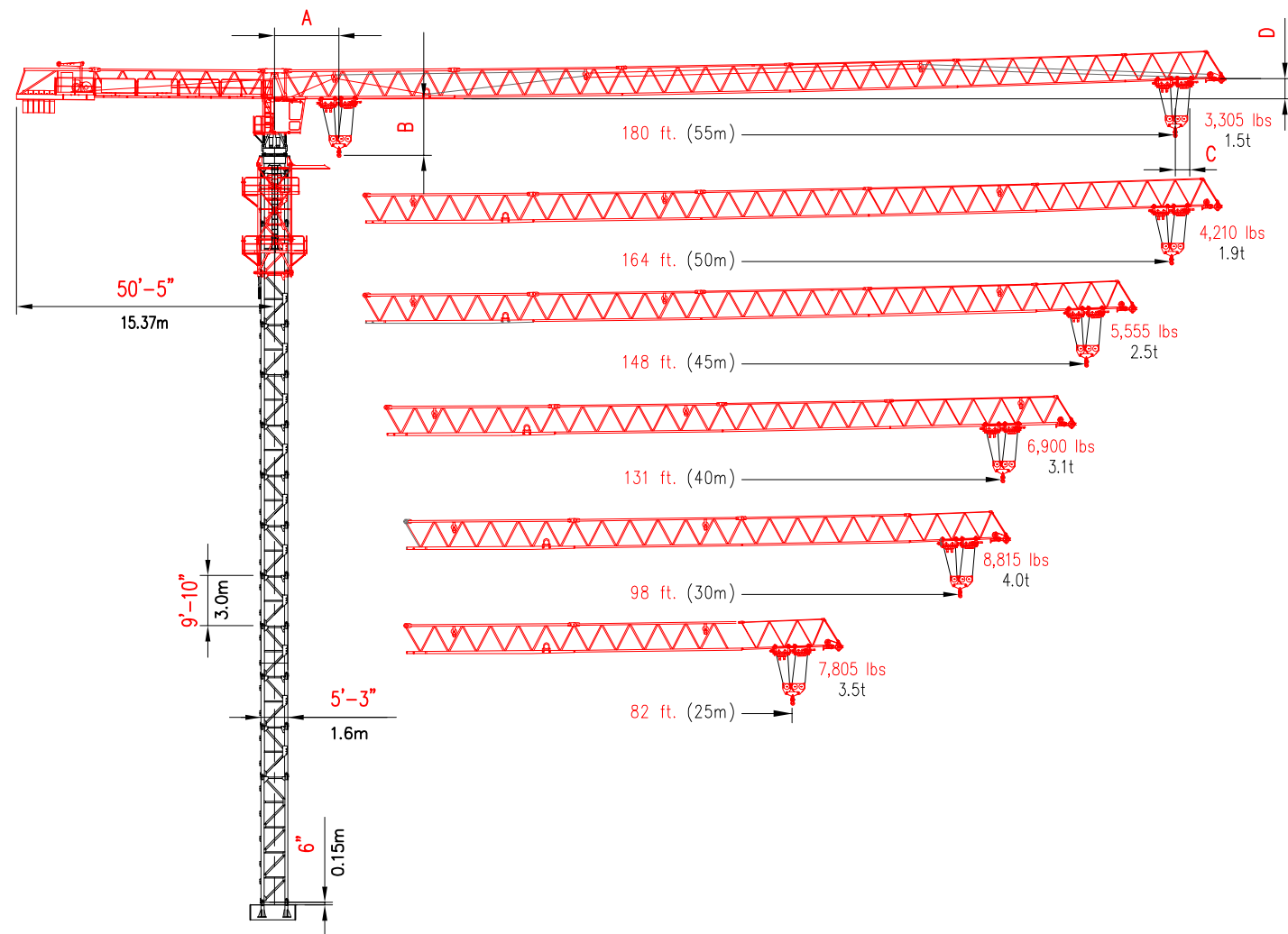


SUN STT 140-8t



SUN CRANE & HOIST

Topless Tower Crane
Modular System



Note: Specification sheet intended for information only*

- A = Centerline crane to minimum 2 part hook radius 9'-10" (3m)
- B = Bottom of jib to hook block 5'-11" (1.8m)
- C = Add for jib tip radius 1'-8" (0.5m)
- D = Jib tilt up 3'-11" (1.2m)

SUN STT 140-8t LINE SPEEDS AND POWER REQUIREMENTS

Hoist Unit
32 hp (24 kW)

2 - Part Line	Line Speed	Capacity
17,640 lbs 8t	0 - 21 ft/min 0 - 6.5 m/min	8,820 lbs 4.0 t
	0 - 98.4 ft/min 0 - 30 m/min	8,820 lbs 4.0 t
	0 - 197 ft/min 0 - 60 m/min	4,410 lbs 2.0 t

4 - Part Line	Line Speed	Capacity
17,640 lbs 8t	0 - 10.5 ft/min 0 - 3.2 m/min	17,640 lbs 8.0 t
	0 - 49 ft/min 0 - 15 m/min	17,640 lbs 8.0 t
	0 - 98.4 ft/min 0 - 30 m/min	8,820 lbs 4.0 t

Unit	Horsepower	Kilowatts	Speed
Trolley	20 hp 70ft-lb	15 kw 95 N-m	0 - 187 ft/min 0 - 57 m/min
Swing	2 x 7.4 hp 2 x 70 ft-lb	2 x 5.5 kw 145 N-m	0 - 0.7 rpm
Traveling	2 x 4.6	2 x 3.4	41 - 82 ft/min 12.5 - 25 m/min

Power Requirements
480 volts, 60 cycle, 3 phase: 250 amp service

Additional Equipment and Services Available

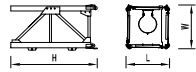
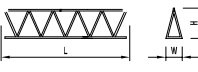
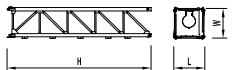
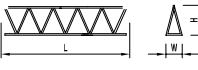
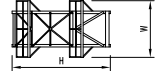
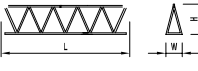

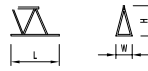


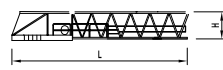
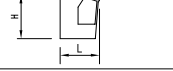
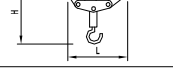
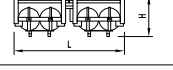
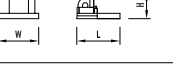
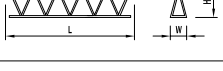
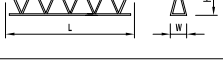

- Peiner Tower Cranes
- Sun Tower Cranes
- Hercules Elevators
- Timberland Derricks
- Specialized Rigging
- Technical Services
- Third Party Inspections
- Parts and Repair Services
- Erection and Dismantlement Services

*Due to product improvement specifications are subject to change without notice.

EQUIPMENT RENTALS - SALES - 24 HOUR SERVICE - YARD STORAGE & TRANSFERS - NATIONWIDE SERVICE

2214 FM 1187, Suite 1
Mansfield, TX 76063
O 817.225.1090
F 817.225.1095
WWW.SUNCRANEANDHOIST.COM

Crane Component List

DESCRIPTION	DIMENSION L x W x H	WEIGHT	DESCRIPTION	DIMENSION L x W x H	WEIGHT
Mast Section 	5'7" x 5'7" x 10'6" 1.7m x 1.7m x 3.2m	2,712 lbs 1230 kg	Jib Section ④ 	33'4" x 3'11" x 5'7" 10.2m x 1.2m x 1.7m	2,425 lbs 1,100 kg
Basic Mast 	25'3" x 5'7" x 5'7" 7.7m x 1.7m x 1.7m	6,185 lbs 2805 kg	Jib Section ⑤ 	33'3" x 3'11" x 5'6" 10.1m x 1.2m x 1.7m	1,720 lbs 780 kg
Climbing Cage 	11'9" x 11'9" x 22'3" 3.6m x 3.6m x 6.8m	6,174 lbs 2,800 kg	Jib Section ⑥ 	16'9" x 3'11" x 5'6" 5.1m x 1.2m x 1.7m	706 lbs 320 kg
Complete Slewing Unit 	13'10" x 6'11" x 8'1" 4.2m x 2.1m x 2.5m	9,702 lbs 4,400 kg	Jib Section ⑦ Nose 	3'10" x 3'11" x 2'1" 1.2m x 1.2m x 0.6m	148 lbs 67 kg
Cathead 	9'8" x 10'2" x 15'5" 2.9m x 3.1m x 4.7m	4,741 lbs 2,150 kg	Tie Bar ⑧ 	5'7" x 0'4" x 0'3" 1.7m x 0.1m x 0.1m	29 lbs 13 kg
Counter-jib 	48'10" x 9'7" x 6'4" 14.9m x 2.9m x 1.9m	9,923 lbs 4,500 kg	Jib Assembly for 180 ft (55 m) jib ①②③④⑤⑥⑦⑧	184'1" x 5'11" x 6'11" 56.1m x 1.8m x 2.1m	17,640 lbs 8,001 kg
Operator's Cabin 	6'3" x 3'7" x 6'11" 1.9m x 1.1m x 2.1m	331 lbs 150 kg	Jib Assembly for 164 ft (50 m) jib ①②③④⑤⑥⑦⑧	165'8" x 5'11" x 6'11" 50.5m x 1.8m x 2.1m	16,900 lbs 7,666 kg
Hook Block 	4'5" x 0'9" x 4'3" 1.3m x 0.2m x 1.3m	560 lbs 254 kg	Jib Assembly for 148 ft (45 m) jib ①②③④⑥⑦⑧	149'3" x 5'11" x 6'11" 45.5m x 1.8m x 2.1m	15,900 lbs 7,212 kg
Jib Trolley 	8'4" x 6'3" x 3'0" 2.5m x 1.9m x 0.9m	1,208 lbs 548 kg	Jib Assembly for 131 ft (40 m) jib ①②③④⑦⑧	132'10" x 5'11" x 6'11" 40.5m x 1.8m x 2.1m	15,200 lbs 6,895 kg
Hoisting Winch 	7'7" x 8'3" x 4'3" 2.3m x 2.5m x 1.3m	10,363 lbs 4,701 kg	Jib Assembly for 98 ft (30 m) jib ①②③⑦⑧	99'8" x 5'11" x 6'11" 30.4m x 1.8m x 2.1m	12,800 lbs 5,806 kg
Jib Section ① 	33'9" x 3'11" x 5'10" 10.3m x 1.2m x 1.8m	4,851 lbs 2,200 kg	Jib Assembly for 82 ft (25 m) jib ①②⑦⑧	83'8" x 5'11" x 6'11" 25.5m x 1.8m x 2.1m	9,800 lbs 4,445 kg
Jib Section ② 	33'8" x 3'11" x 5'9" 10.2m x 1.2m x 1.8m	3,640 lbs 1,651 kg			
Jib Section ③ 	33'6" x 3'11" x 5'8" 10.2m x 1.2m x 1.7m	2,977 lbs 1,350 kg			

NOTE: Weights and dimensions are approximate. Weigh components before lifting.

Turntable upper weight (slewing motors incl.)	2884 kg/6359 lbs
Turntable lower weight (slewing ring incl.)	2454 kg/5411 lbs
Top climbing unit total weight (all included)	5171 kg/11,400 lbs
Counter-jib Ballast Block A	1970 kg/4,344 lbs
Counter-jib Ballast Block B	1700 kg/3,748 lbs
Base Ballast C	2800 kg/6,174 lbs
Base Ballast D	2500 kg/5,512 lbs

- Jib assembly doesn't include trolley and load block
- Hoist unit doesn't include wire rope, counterjib frame, platforms
- Long counterjib doesn't include hoist winch frame and tie bars
- Operator's cabin doesn't include platform (400 kg/880 lbs)
- Turntable complete doesn't include platform and operator cabin
- Counterjib includes handrails and platforms
- Cabin tower includes platform and ladder

Radius and Capacities

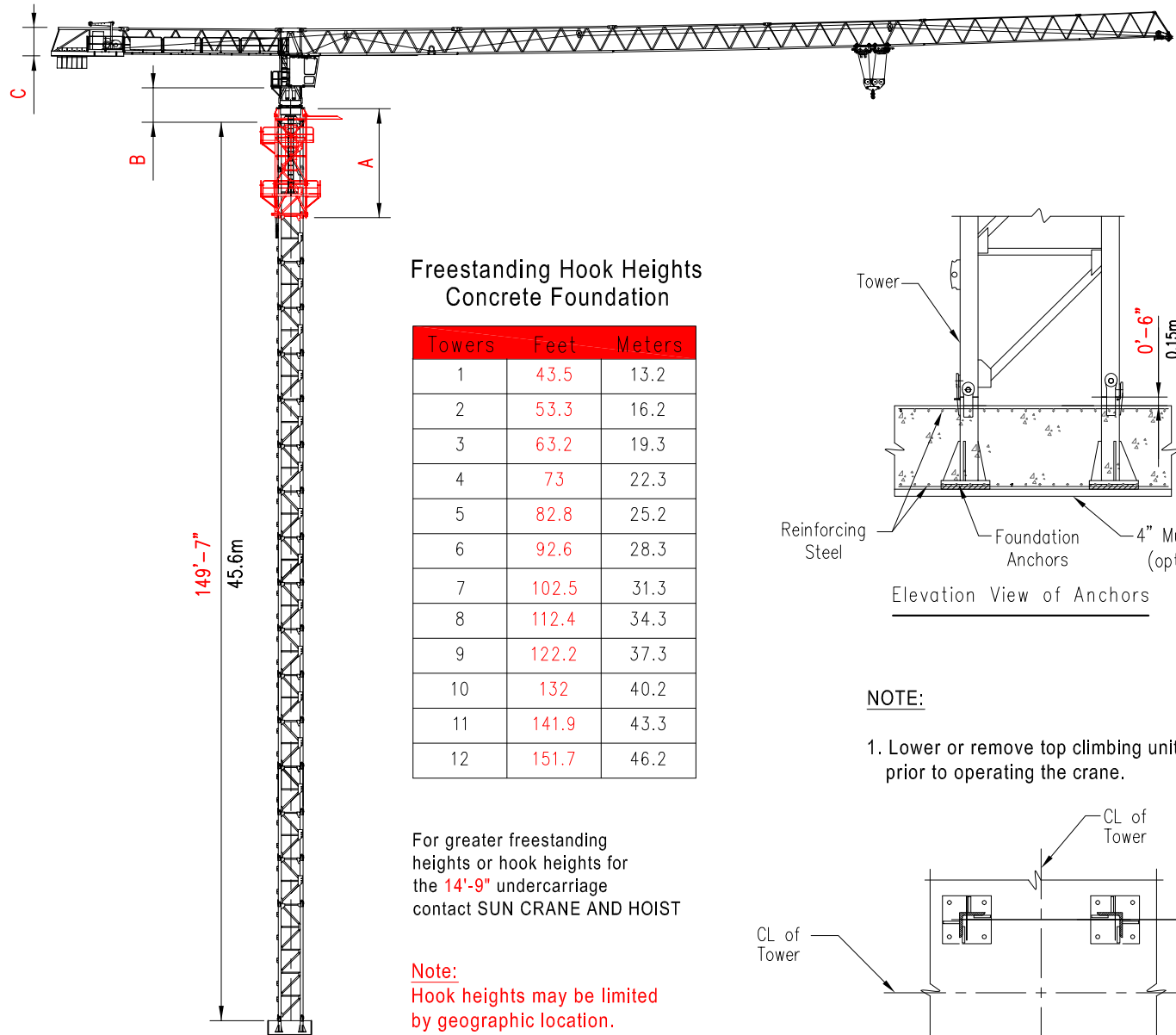
Radius and capacity (feet and pounds)		2-Part-Line									ft
Hook		50	66	82	98	115	131	148	164	180	
Radius											lbs
180ft	8,820 lbs - 79'-0"	8,820	8,820	8,443	6,812	5,512	4,674	4,057	3,616	3,307	
164ft	8,820 lbs - 86'-0"	8,820	8,820	8,820	7,539	6,614	5,644	4,762	4,211		
148ft	8,820 lbs - 97'-0"	8,820	8,820	8,820	8,730	7,341	6,305	5,556			
131ft	8,820 lbs - 103'-0"	8,820	8,820	8,820	8,820	7,893	6,900				
98ft	8,820 lbs - 98'-0"	8,820	8,820	8,820	8,820						
82ft	8,820 lbs - 73'-0"	8,820	8,820	7,738							

Radius and capacity (feet and pounds)		4-Part-Line									ft
Hook		50	66	82	98	115	131	148	164	180	
Radius											lbs
180ft	17,640 lbs - 41'-0"	14,330	10,229	7,562	5,997	4,784	3,836	3,175	2,690	2,381	
164ft	17,640 lbs - 43'-0"	15,102	11,045	8,708	6,658	5,313	4,343	3,704	3,285		
148ft	17,640 lbs - 45'-0"	16,072	12,258	9,700	7,848	6,460	5,423	4,630			
131ft	17,640 lbs - 47'-0"	16,843	12,699	9,965	8,333	7,011	5,975				
98ft	17,640 lbs - 47'-0"	16,843	12,699	9,965	8,333						
82ft	17,640 lbs - 38'-0"	12,941	9,083	6,812							

Radius and capacity (meters and tons)		2-Part-Line									m
Hook		15	20	25	30	35	40	45	50	55	
Radius											t
55m	4t - 24.0m	4.00	4.00	3.83	3.09	2.50	2.12	1.84	1.64	1.50	
50m	4t - 26.3m	4.00	4.00	4.00	3.42	3.00	2.56	2.16	1.91		
45m	4t - 29.7m	4.00	4.00	4.00	3.96	3.33	2.86	2.52			
40m	4t - 31.3m	4.00	4.00	4.00	4.00	3.58	3.13				
30m	4t - 30.0m	4.00	4.00	4.00	4.00						
25m	4t - 22.28m	4.00	4.00	3.51							

Radius and capacity (meters and tons)		4-Part-Line									m
Hook		15	20	25	30	35	40	45	50	55	
Radius											t
55m	8t - 12.50m	6.50	4.64	3.43	2.72	2.17	1.74	1.44	1.22	1.08	
50m	8t - 13.2m	6.85	5.01	3.95	3.02	2.41	1.97	1.68	1.49		
45m	8t - 13.6m	7.29	5.56	4.40	3.56	2.93	2.46	2.10			
40m	8t - 14.2m	7.64	5.76	4.52	3.78	3.18	2.71				
30m	8t - 14.2m	7.64	5.76	4.52	3.78						
25m	8t - 11.56m	5.87	4.12	3.09							

Hook Heights / Freestanding



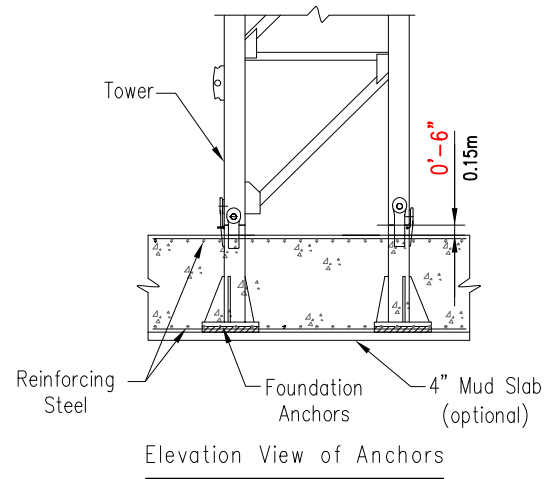
Freestanding Hook Heights
Concrete Foundation

Towers	Feet	Meters
1	43.5	13.2
2	53.3	16.2
3	63.2	19.3
4	73	22.3
5	82.8	25.2
6	92.6	28.3
7	102.5	31.3
8	112.4	34.3
9	122.2	37.3
10	132	40.2
11	141.9	43.3
12	151.7	46.2

For greater freestanding heights or hook heights for the 14'-9" undercarriage contact SUN CRANE AND HOIST

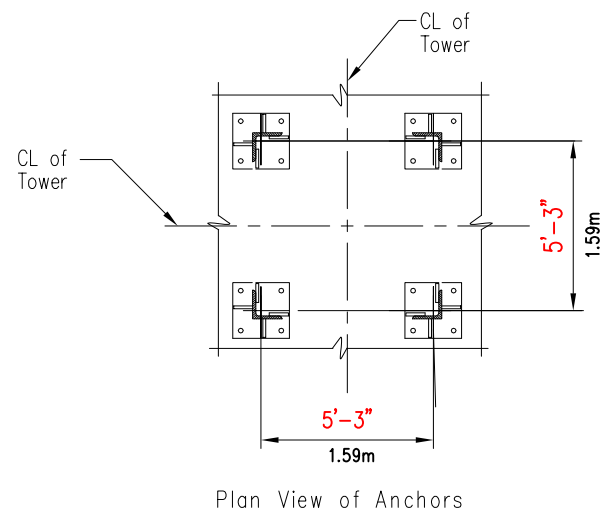
Note: Hook heights may be limited by geographic location.

- A = Height of telescoping unit 22'-3" (6.8m)
- B = Height of of complete slewing unit 8'-1" (2.5m)
- C = Height of jib section 6'-4" (1.9m)

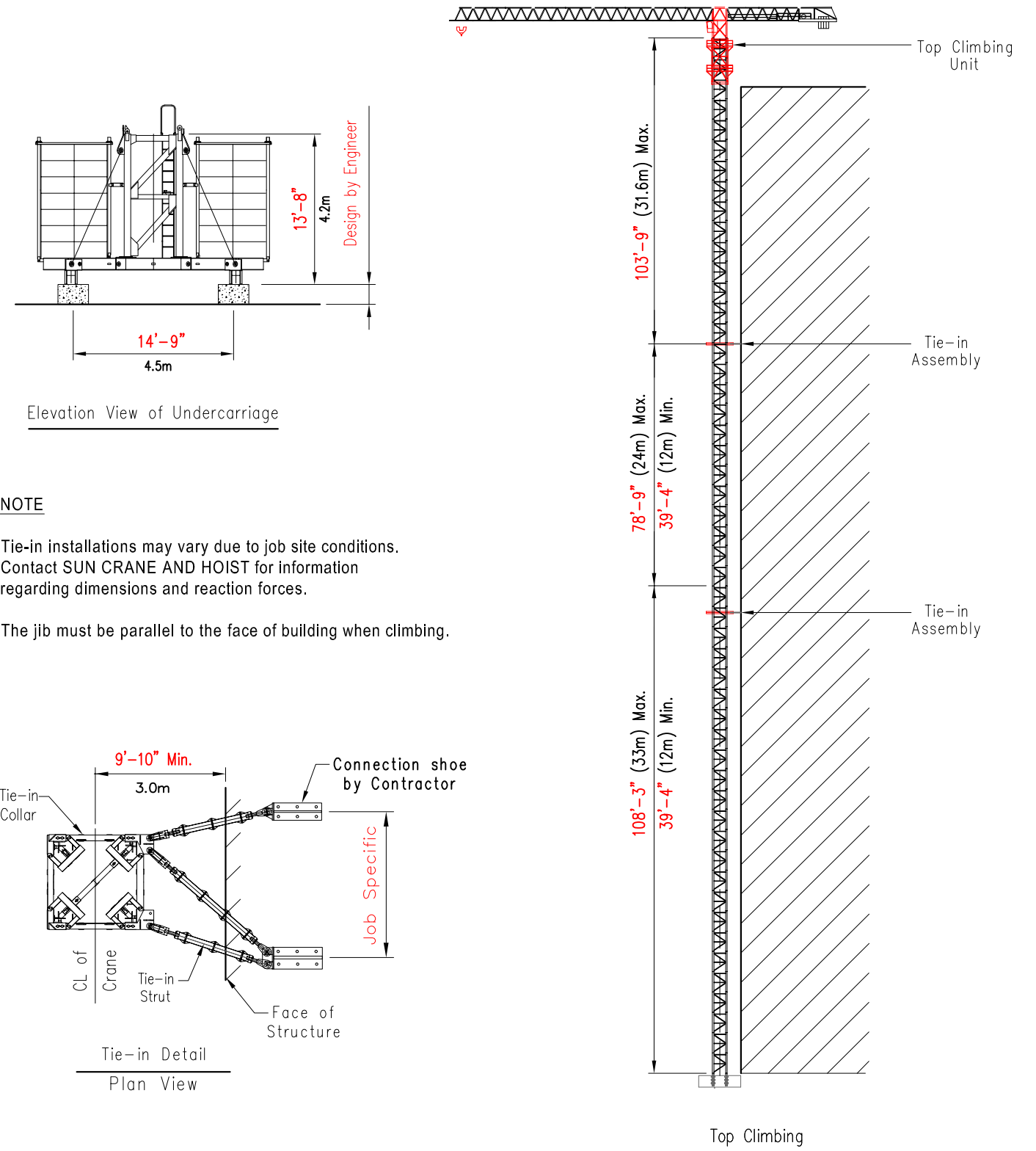


NOTE:

1. Lower or remove top climbing unit prior to operating the crane.



Climbing / Tie-in Assembly



NOTE

Tie-in installations may vary due to job site conditions. Contact SUN CRANE AND HOIST for information regarding dimensions and reaction forces.

The jib must be parallel to the face of building when climbing.