

Turnkey Solutions * Parts and Service * Training and Safety * Transportation

SUN STT 553-24

Topless Tower Crane

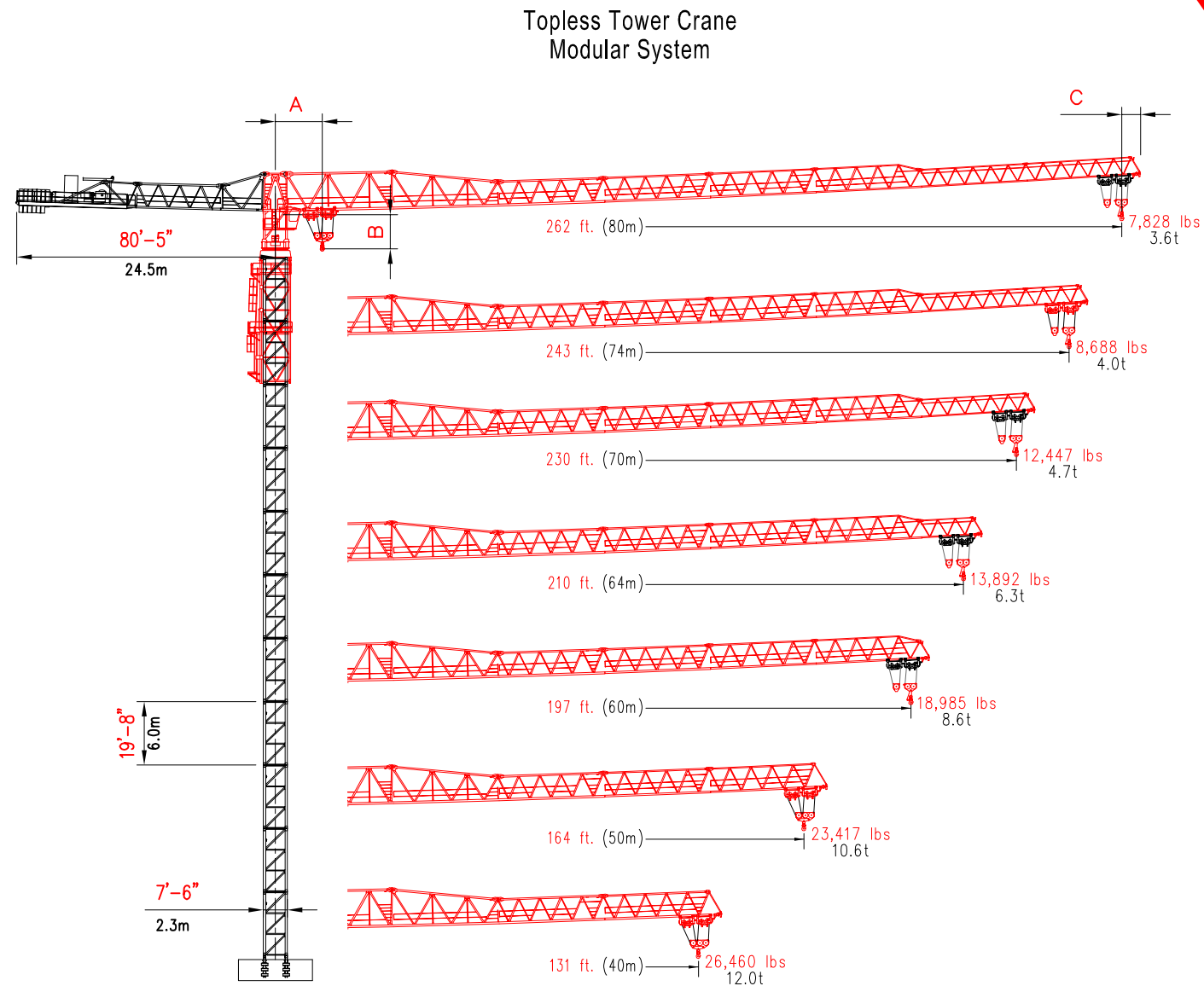


2214 Hwy 1187 - BLDG 1
Mansfield, TX. 76063
Office : 817.225.1090 * Fax : 817.225.1035
Website : www.suncraneandhoist.com

SUN STT 553-24

SUN STT 553-24

LINE SPEEDS AND POWER REQUIREMENTS



- A = Centerline crane to minimum 4-part hook radius 12'-6" (3.8m)
- B = Bottom of jib to hook block 11'-10" (3.6m)
- C = Add for jib tip radius 5'-11" (1.8m)

Hoist Unit
121 hp (90kW)

2 - Part Line	Line Speed	Capacity
16,460 lbs 12t	131.2 ft/min 40 m/min	26,460 lbs 12t
	315 ft/min 96 m/min	16,540 lbs 7.5t
	525 ft/min 160 m/min	7,720 lbs 3.5t

4 - Part Line	Line Speed	Capacity
52,920 lbs 24t	66 ft/min 20 m/min	52,920 lbs 24t
	158 ft/min 48 m/min	33,080 lbs 15t
	263 ft/min 80 m/min	15,440 lbs 7t

Unit	Horsepower	Kilowatts	Speed
Trolley	14.75	11	0 - 213.3 ft/min 0 - 65 m/min
Swing	3 x 107ft-lb	3 x 145 Nm	0 - 0.8 rpm

Power Requirements
480 volts, 60 cycle, 3 phase: 300 amp service

Additional Equipment and Services Available

- Peiner Tower Cranes
- Sun Tower Cranes
- Hercules Elevators
- Timberland Derricks
- Specialized Rigging
- Technical Services
- Third Party Inspections
- Parts and Repair Services
- Erection and Dismantlement Services

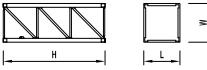
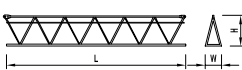
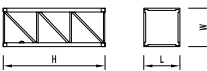
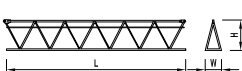
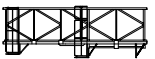
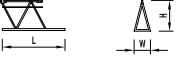

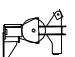
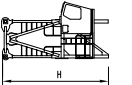
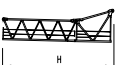

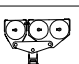
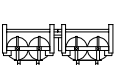






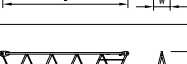

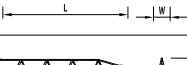
*Due to product improvement specifications are subject to change without notice.

EQUIPMENT RENTALS - SALES - 24 HOUR SERVICE - YARD STORAGE & TRANSFERS - NATIONWIDE SERVICE

2214 FM 1187, Suite 1
Mansfield, TX 76063
O 817.225.1090
F 817.225.1095

WWW.SUNCRANEANDHOIST.COM

Crane Component List

DESCRIPTION	DIMENSION L x W x H	WEIGHT	DESCRIPTION	DIMENSION L x W x H	WEIGHT
Mast H205B 	7'6" x 7'6" x 19'8" 2.3m x 2.3m x 6.0m	10,700 lbs 4,853 kg	Jib Section ⑦ 	33'6" x 4'7" x 5'9" 10.2m x 1.4m x 1.8m	2,730 lbs 1,238 kg
Mast H205A 	7'8" x 7'8" x 19'8" 2.3m x 2.3m x 6.0m	14,396 lbs 6,530 kg	Jib Section ⑧ 	33'4" x 4'7" x 5'8" 10.2m x 1.4m x 1.7m	2,110 lbs 957 kg
Telescoping Cage 	14'7" x 26'5" x 39'1" 4.5m x 8.1m x 11.9m	30,200 lbs 13,698 kg	Jib Section ⑨ 	13'6" x 4'7" x 5'8" 4.1m x 1.4m x 1.7m	695 lbs 315 kg
Complete Turntable 	9'9" x 9'9" x 7'8" 3.0m x 3.0m x 2.3m	25,500 lbs 11,567 kg	Jib Tip 	2'5" x 4'7" x 2'0" 0.7m x 1.4m x 0.6m	443 lbs 201 kg
Cathead 	9'9" x 11'10" x 21'9" 3.0m x 3.6m x 6.62m	12,400 lbs 5,625 kg	Jib Assembly for 262.5ft (80m) jib ①②③④⑤⑥⑦⑧ + Tip	262'6" x 4'7" x 12'6" 80m x 1.4m x 3.8m	61,740 lbs 28,005 kg
Counter-jib 	5'7" x 12'1" x 39'4" 1.7m x 3.7m x 12.0m	12,400 lbs 5,625 kg	Jib Assembly for 242.8 ft (74 m) jib ①②③④⑤⑥⑦⑧ + Tip	242'10" x 4'7" x 12'6" 74m x 1.4m x 3.81m	60,330 lbs 27,365 kg
Counter-weight Deck 	11'10" x 10'4" x 37'5" 3.6m x 3.3m x 11.4m	31,300 lbs 14,197 kg	Jib Assembly for 229.7 ft (70 m) jib ①②③④⑤⑥⑦ + Tip	229'8" x 4'7" x 12'6" 70m x 1.4m x 3.81m	59,630 lbs 27,048 kg
Hook Block 	5'9" x 1'1" x 6'2" 1.8m x 0.3m x 1.9m	1,151 lbs 522 kg	Jib Assembly for 210ft (64m) jib ①②③④⑤⑥⑧ + Tip	210' x 4'7" x 12'6" 64m x 1.4m x 3.81m	57,595 lbs 26,125 kg
Jib Trolley 	10'8" x 6'1" x 4'2" 3.3m x 1.9m x 1.3m	2,700 lbs 1,225 kg	Jib Assembly for 196.8ft (60m) jib ①②③④⑤⑥ + Tip	196'10" x 4'7" x 12'6" 60m x 1.4m x 3.81m	56,900 lbs 25,809 kg
Jib Section ① 	34'2" x 4'7" x 12'6" 10.4m x 1.4m x 3.8m	15,500 lbs 7,031 kg	Jib Assembly for 164ft (50m) jib ①②③④⑤ + Tip	164' x 4'7" x 12'6" 50m x 1.4m x 3.81m	50,950 lbs 23,111 kg
Jib Section ② 	34'0" x 4'7" x 12'1" 10.4m x 1.4m x 3.7m	10,770 lbs 4,885 kg	Jib Assembly for 131.2ft (40m) jib ①②③④ + Tip	131'2" x 4'7" x 12'6" 40m x 1.4m x 3.81m	45,000 lbs 20,412 kg
Jib Section ③ 	34'0" x 4'7" x 8'2" 10.4m x 1.4m x 2.5m	9,980 lbs 4,527 kg	Counter-Jib Block A 	8'2" x 1'3" x 7'5" 2.5m x 0.4m x 2.3m	8,820 lbs 4,000 kg
Jib Section ④ 	33'9" x 4'7" x 8'0" 10.3m x 1.4m x 2.4m	7,950 lbs 3,606 kg	Counter-Jib Block B 	8'2" x 1'3" x 3'10" 2.5m x 0.4m x 1.2m	4,410 lbs 2,000 kg
Jib Section ⑤ 	33'8" x 4'7" x 7'10" 10.26m x 1.4m x 2.4m	5,950 lbs 2,699 kg	Counter-Jib Block C 	7'1" x 1'3" x 2'4" 2.2m x 0.4m x 0.7m	2,205 lbs 1,000 kg
Jib Section ⑥ 	33'7" x 4'7" x 7'9" 10.2m x 1.4m x 2.4m	5,950 lbs 2,699 kg			

NOTE: Weights and dimensions are approximate. Weigh components before lifting.

- Jib assembly doesn't include trolley, pulley support and load block.
- Counter-jib include hoist winch, handrails, platforms and tie bars.
- Turntable complete doesn't include platform and operator cabin.
- Cathead includes cabin, rails, platform and ladder.
- Telescoping cage doesn't include platform and ladder.

Radius and Capacities

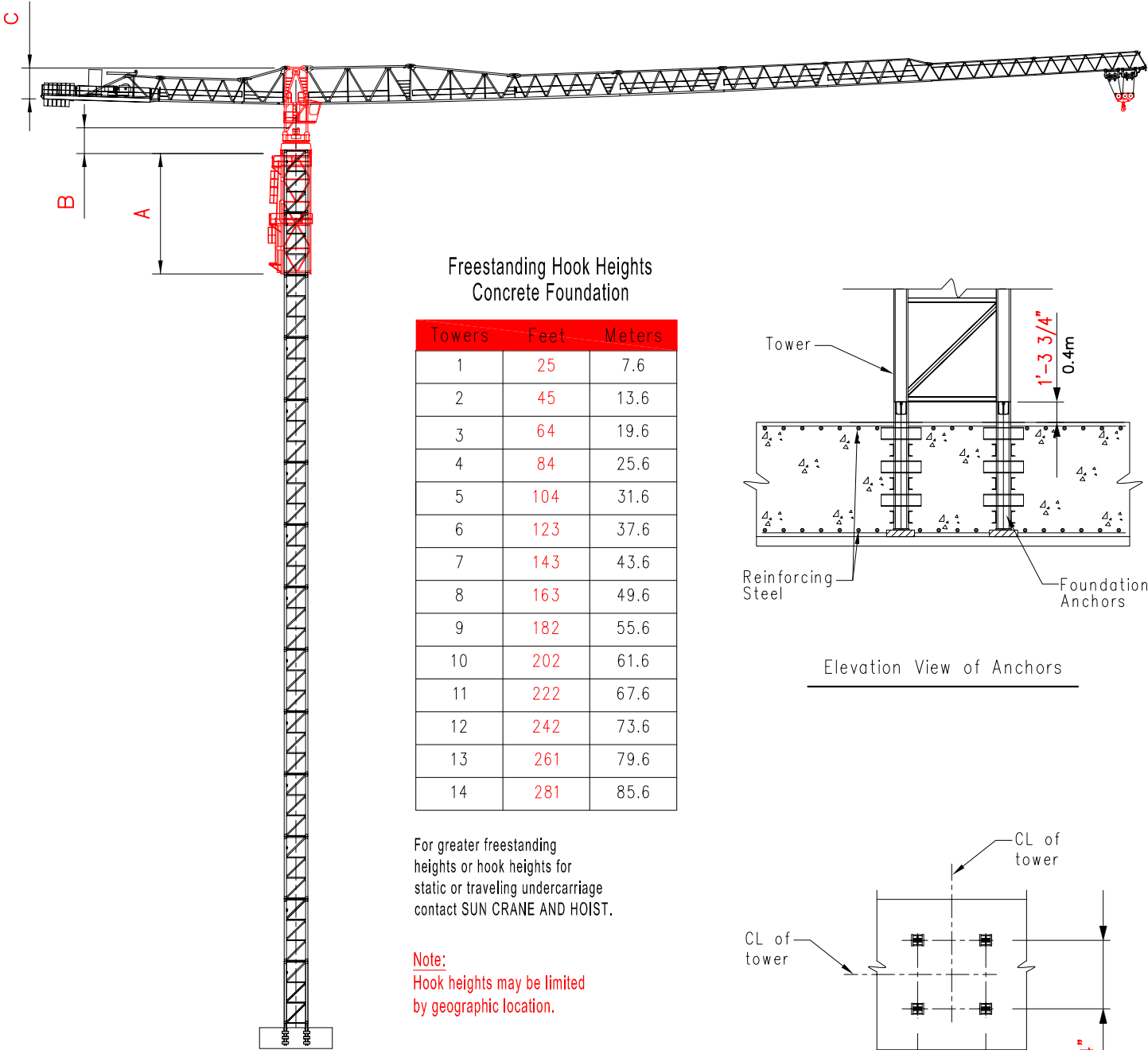
Radius and capacity (feet and pounds)		2-Part-Line									
		ft									
Hook Radius		98	131	144	164	177	197	210	230	243	263
263ft	26,460 lbs - 90'-0"	26,085	18,676	16,692	14,310	13,010	11,422	10,518	9,360	8,688	7,828
243ft	26,460 lbs - 90'-0"	26,085	16,471	14,487	14,310	13,010	11,422	10,518	9,360	8,688	
230ft	26,460 lbs - 121'-0"	26,460	24,145	21,653	18,654	17,045	15,016	13,892	12,447		
210ft	26,460 lbs - 121'-0"	26,460	24,145	21,653	18,654	17,045	15,016	13,892			
197ft	26,460 lbs - 147'-0"	26,460	26,460	26,460	23,417	21,455	18,985				
164ft	26,460 lbs - 147'-0"	26,460	26,460	26,460	23,417						
131ft	26,460 lbs - 131'-0"	26,460	26,460								

Radius and capacity (feet and pounds)		4-Part-Line									
		ft									
Hook Radius		98	131	144	164	177	197	210	230	243	263
263ft	52,920 lbs - 51'-0"	23,880	16,471	14,487	12,105	10,805	9,217	8,313	7,155	6,483	5,623
243ft	52,920 lbs - 51'-0"	23,880	16,471	14,487	12,105	10,805	9,217	8,313	7,155	6,483	
230ft	52,920 lbs - 63'-0"	31,245	21,940	19,448	16,449	14,840	12,811	11,687	10,242		
210ft	52,920 lbs - 63'-0"	31,245	21,940	19,448	16,449	14,840	12,811	11,687			
197ft	52,920 lbs - 76'-0"	39,315	27,937	24,872	21,212	19,250	16,780				
164ft	52,920 lbs - 76'-0"	39,315	27,937	24,872	21,212						
131ft	52,920 lbs - 79'-0"	40,881	29,106								

Radius and capacity (meters and metric tons)		2-Part-Line									
		m									
Hook Radius		30	34	40	44	50	54	60	64	70	74
80m	12t - 28.0m	11.83	8.47	7.57	6.49	5.90	5.18	4.77	4.25	3.94	3.55
74m	12t - 28.0m	11.83	7.47	6.57	6.49	5.90	5.18	4.77	4.25	3.94	
70m	12t - 37.0m	12.00	10.95	9.82	8.46	7.73	6.81	6.30	5.65		
64m	12t - 37.0m	12.00	10.95	9.82	8.46	7.73	6.81	6.30			
60m	12t - 45.0m	12.00	12.00	12.00	10.62	9.73	8.61				
50m	12t - 45.0m	12.00	12.00	12.00	10.62						
40m	12t - 40.0m	12.00	12.00								

Radius and capacity (meters and metric tons)		4-Part-Line									
		m									
Hook Radius		30	34	40	44	50	54	60	64	70	74
80m	24t - 15.0m	10.83	7.47	6.57	5.49	4.90	4.18	3.77	3.25	2.94	2.55
74m	24t - 15.0m	10.83	7.47	6.57	5.49	4.90	4.18	3.77	3.25	2.94	
70m	24t - 19.0m	14.17	9.95	8.82	7.46	6.73	5.81	5.30	4.65		
64m	24t - 19.0m	14.17	9.95	8.82	7.46	6.73	5.81	5.30			
60m	24t - 23.0m	17.83	12.67	11.28	9.62	8.73	7.61				
50m	24t - 23.0m	17.83	12.67	11.28	9.62						
40m	24t - 24.0m	18.54	13.20								

Hook Heights / Freestanding



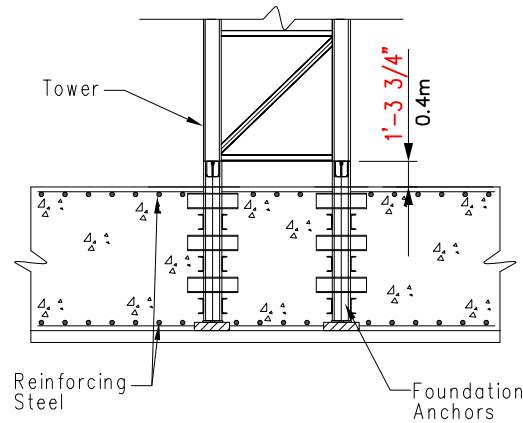
Freestanding Hook Heights
Concrete Foundation

Towers	Feet	Meters
1	25	7.6
2	45	13.6
3	64	19.6
4	84	25.6
5	104	31.6
6	123	37.6
7	143	43.6
8	163	49.6
9	182	55.6
10	202	61.6
11	222	67.6
12	242	73.6
13	261	79.6
14	281	85.6

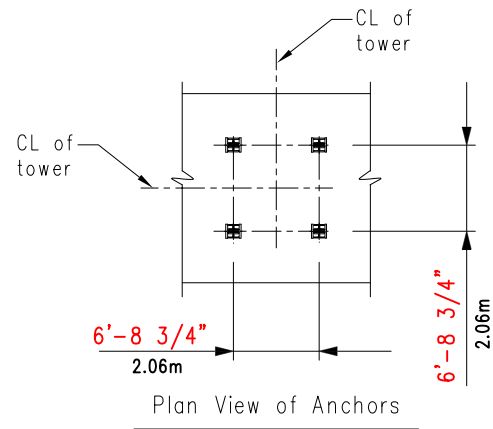
For greater freestanding heights or hook heights for static or traveling undercarriage contact SUN CRANE AND HOIST.

Note:
Hook heights may be limited by geographic location.

A = Height of telescoping unit 38'-1" (11.6m)
B = Height of of complete slewing unit 11'-8" (3.6m)
C = Height of jib section 10'-4" (3.2m)

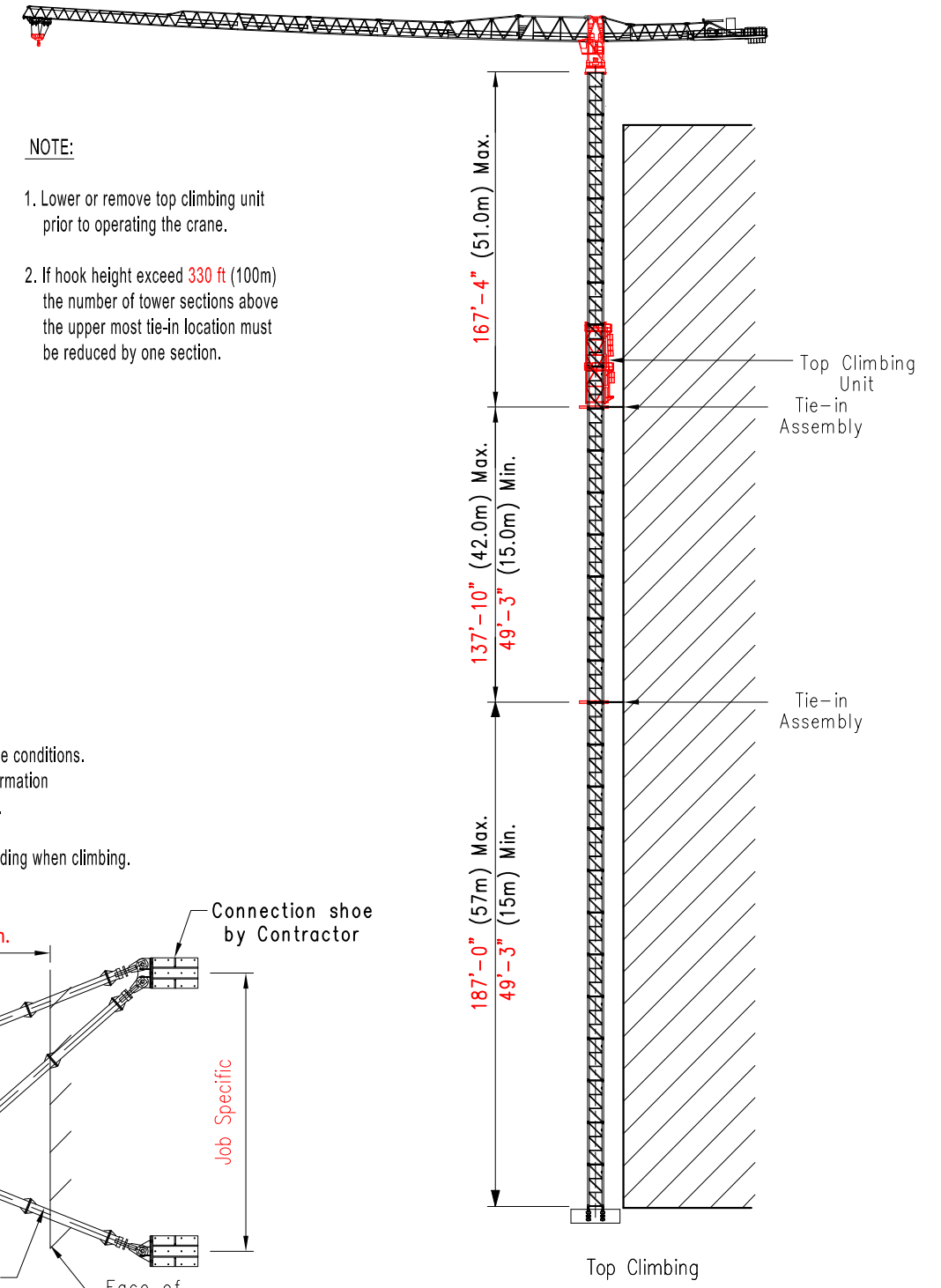


Elevation View of Anchors



Plan View of Anchors

Climbing / Tie-in Assembly



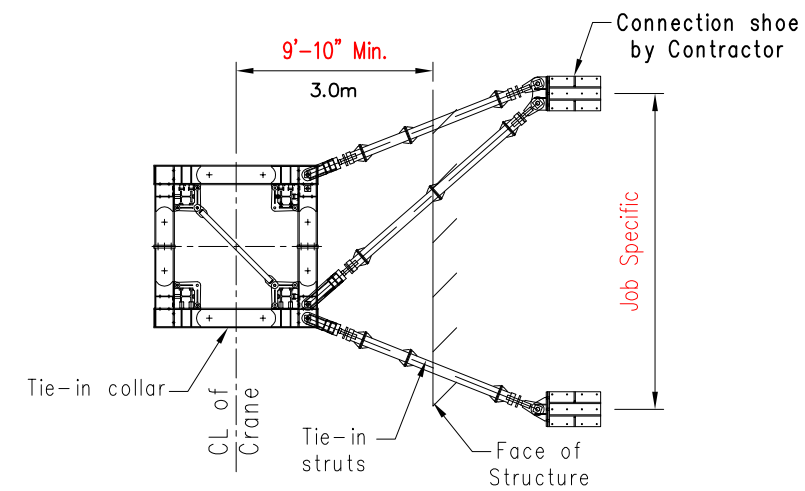
NOTE:

1. Lower or remove top climbing unit prior to operating the crane.
2. If hook height exceed 330 ft (100m) the number of tower sections above the upper most tie-in location must be reduced by one section.

NOTE

Tie-in installations may vary due to job site conditions. Contact SUN CRANE AND HOIST for information regarding dimensions and reaction forces.

The jib must be parallel to the face of building when climbing.



Tie-in Detail
Plan View