

## FEATURES

### SAFETY FEATURES

- Electronic and mechanical door interlocks on elevator cars and ground enclosure unit
- Overload device to prevent elevator operation when rated payload has been exceeded
- Spring buffer assembly
- Low and medium speed elevators do not require counterweights
- Galvanized tower sections and tie-ins

### DESIGN FEATURES

- Smooth starting and stopping without surging or jarring the elevator car
- The lifting speed can be easily controlled and is infinitely variable
- The elevator starting current is lower than the rated current
- Using the frequency conversion drive greatly reduces mechanical wear and tear on the elevator and its components
- The frequency conversion drive is more efficient and uses less power.

### INSTALLATION

- For instructions regarding the erection, climbing, dismantling, operation and maintenance of the elevator car refer to the operations manual.
- This product must be operated by competent, orientated personnel and used in a safe manner to conform with the manufacturers specifications and in compliance with all federal, state standards and regulations.
- Drawings are for illustrative purposes only and do not necessarily show the exact configurations of products offered on the market at a particular time.

SUN CRANE AND HOIST Company not only owns and maintains one of the largest elevator fleets in the United States, but also exclusively offers the Hercules elevators. Hercules elevators are the newest, fastest, highest capacity of counterweightless elevators available in America.

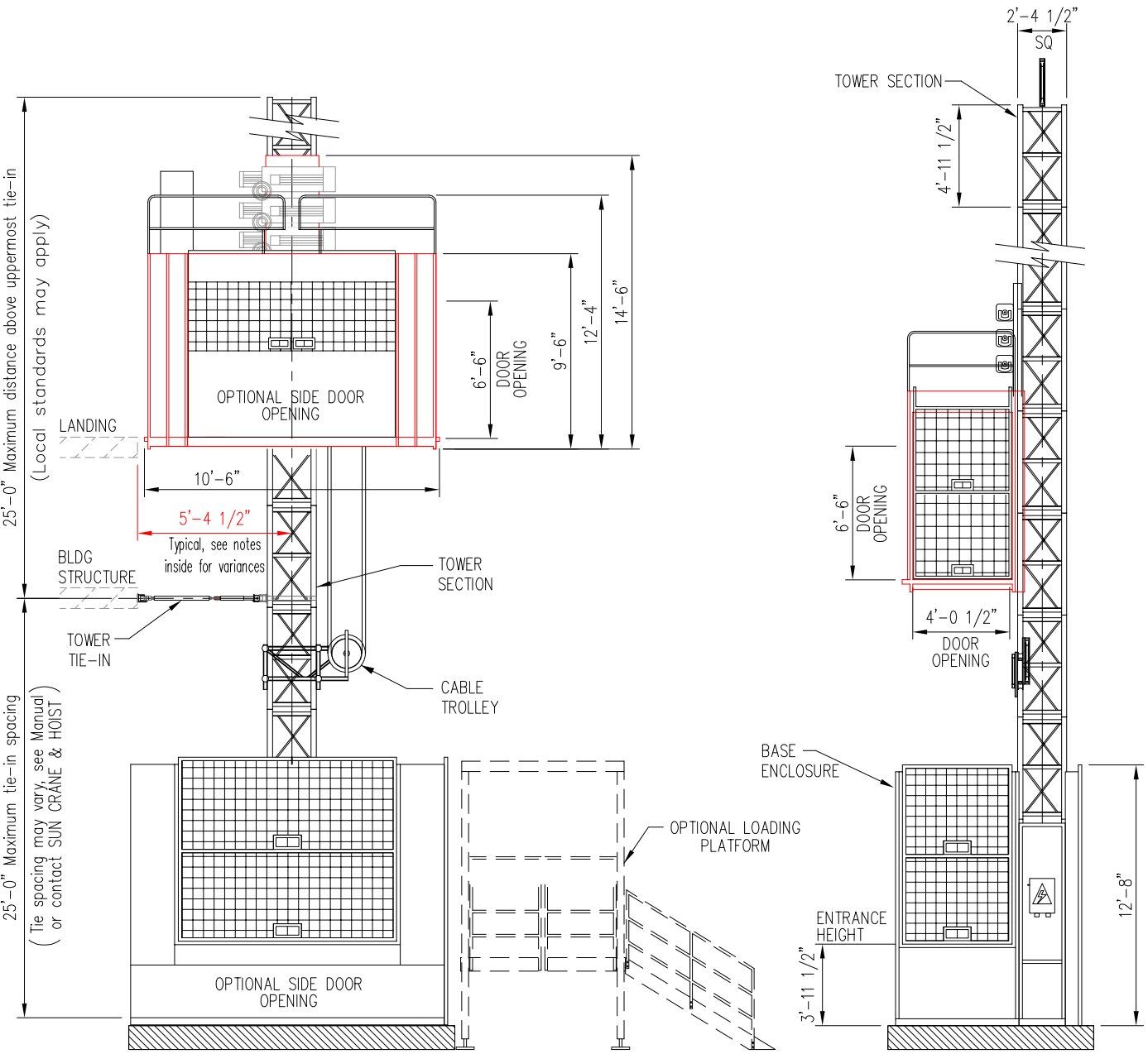
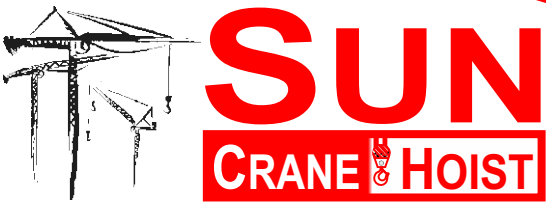
At SUN CRANE AND HOIST Company, we believe that our business is not only equipment but also service. Because of this belief, Sun Crane and Hoist Company offers services for all rigging, mechanical, electrical and engineering needs. We make it our business to ensure that the services we offer are far superior to any of our competitors because we understand that your project is only as good as the equipment used to build it.

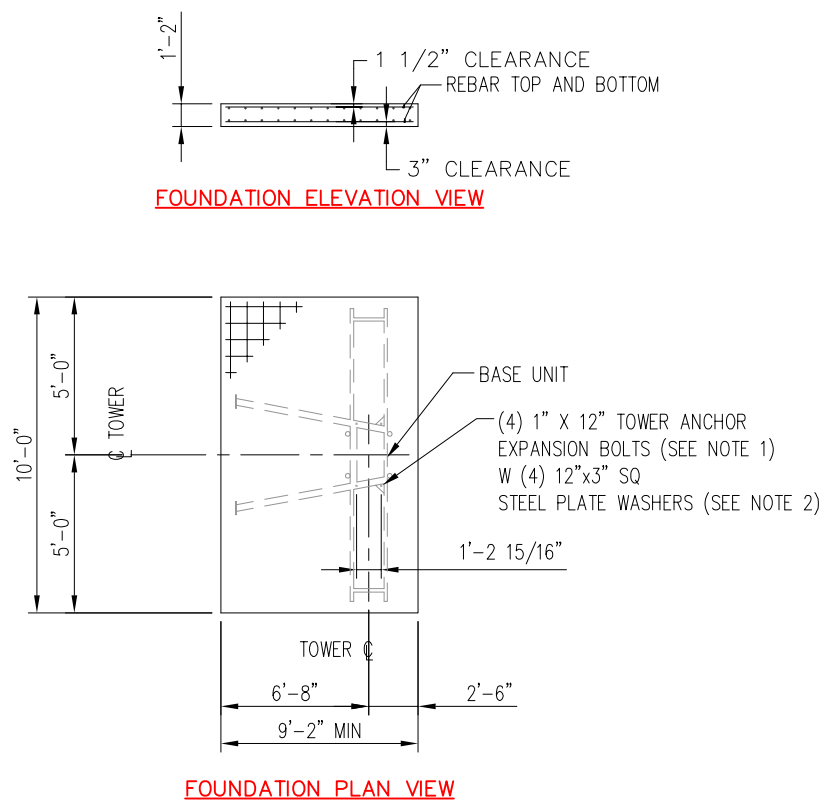


EQUIPMENT RENTALS - SALES - 24 HOUR SERVICE - YARD STORAGE & TRANSFERS - NATIONWIDE SERVICE

2214 FM 1187, Suite 1  
Mansfield, TX 76063  
O 817.225.1090  
F 817.225.1095

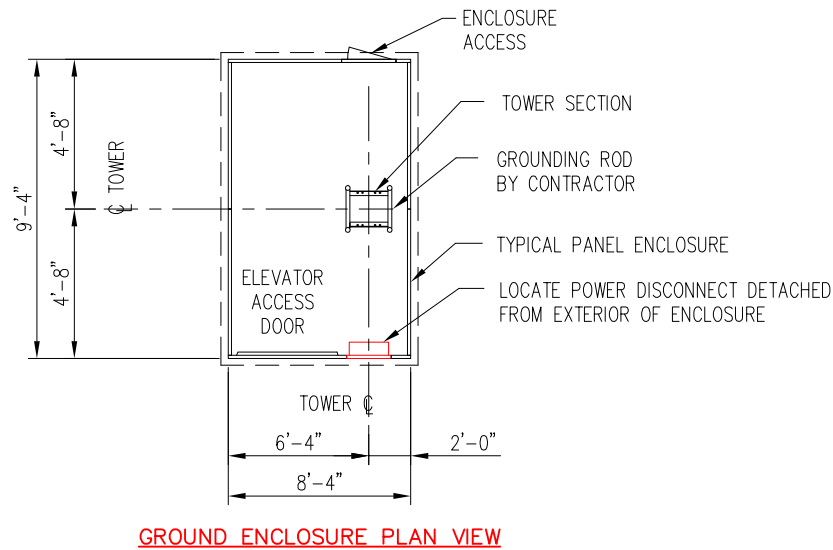
WWW.SUNCRANEANDHOIST.COM





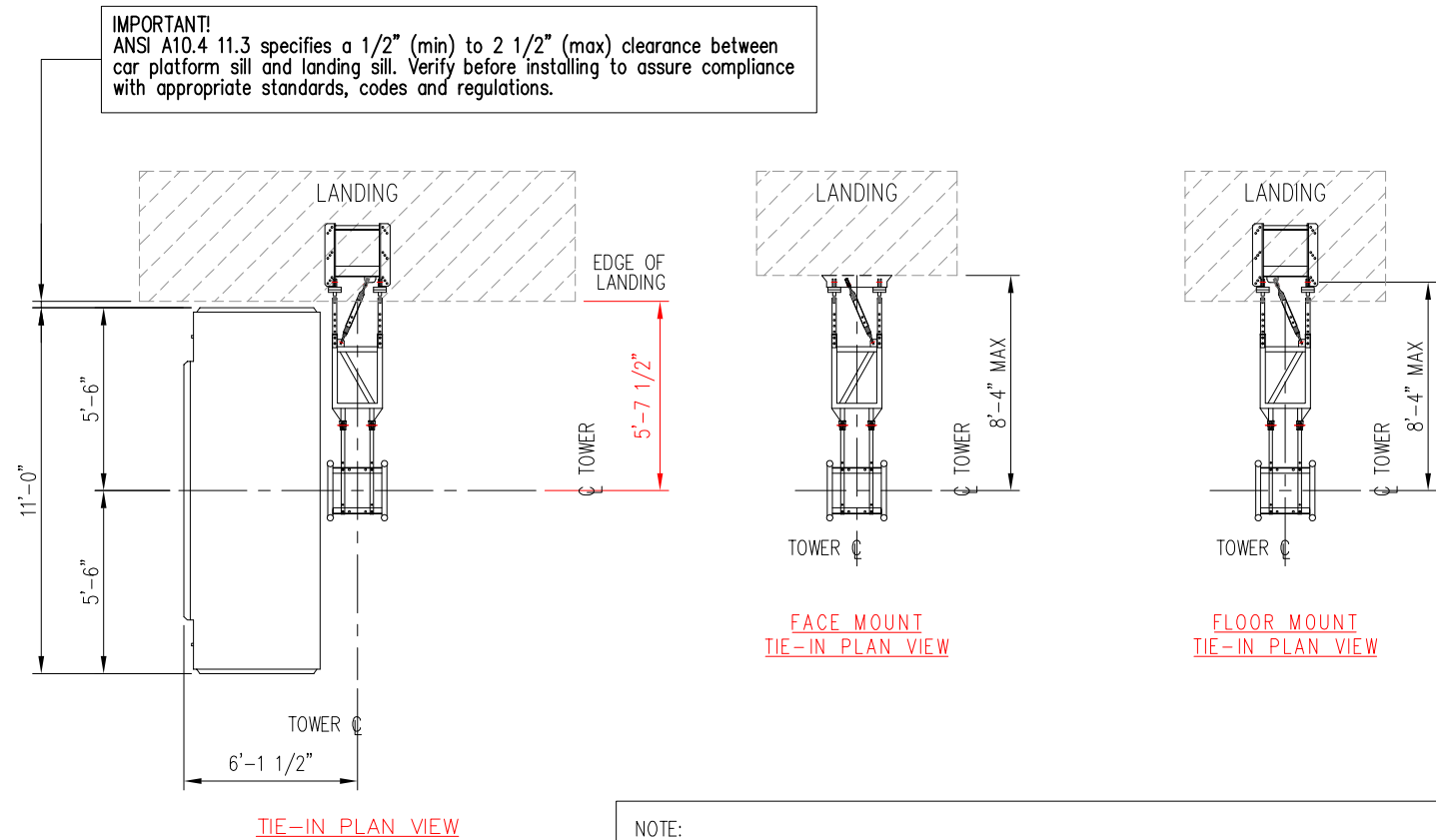
NOTES:

- 1" x 12" HILTI Kwik Bolt II anchor bolt or approved equal. Bolt by contractor. Install according to bolt manufacturer's requirements.
- Foundation slab: 9'-2" x 10'-0" x 1'-2" with 3,500 psi concrete.
- Reinforcing bars are #5 ASTM 615-60 10" o.c. each way, top and bottom.
- Foundation based on 490 foot mast height. For greater heights contact SUN CRANE AND HOIST for design.
- Foundation pad designed for a minimum soil bearing of 1,000 psf.
- Refer to manufacturers manual before installing, operating, servicing, repairing, jumping or dismantling.



GROUND ENCLOSURE PLAN VIEW

Note: Specification sheet intended for information only\*



NOTE:  
Distances above are for a typical type 5 tie-in. Alternate anchoring methods are available.  
Contact SUN CRANE AND HOIST for information.

MODEL VARIATIONS

F4400 SLS

150 FPM

GENERAL

LOAD CAPACITY  
INSIDE ELEVATOR CAR DIMENSIONS  
DOOR OPENING (END)  
TOWER SECTION LENGTH  
MAXIMUM TOWER HEIGHT  
MAXIMUM TIE-IN SPACING

4,400 lb (PER CAR)  
4'-2" wide x 8'-2" high x 8'-2" long  
4'-0 1/2" x 6'-6"  
4'-11 1/2"  
490'-0" (For greater heights consult SUN CRANE AND HOIST)  
25'-0"

WEIGHTS

GROUND ENCLOSURE  
BASE UNIT  
ELEVATOR CAR  
TOWER SECTION (4.5 mm)  
TIE-IN (TYPE 4)

1,980 lb  
1,200 lb  
4,400 lb  
460 lb  
212 lb per set

ELECTRICAL

POWER REQUIREMENTS (PER CAR)  
MOTORS (PER CAR)

480 VOLTS - 100 AMPS - 3 PHASE - 60 HZ  
2 x 15 HP

Note: Specification sheet intended for information only\*